

Industrial-Grade Quality At Entry-Level Budget

Flatbed & Roll-to-Roll All In 1



Product Parameters

Product Name UV Flatbed Inkjet Printer	Brand Sunthinks
Printer Model SGH2513	Printhead Rioch GH2220
Resolution Max 720*1200dpi	Ink System Automatic Ink pressing system
Colors C/M/Y/K/W/W, C/M/Y/K+W/W+V/V, C/M/Y/K+C/M/Y/K	Printing Size 2500*1300mm
Printing Height Max 150mm	Printing Speed Max 32 m ² /h
Features Hybrid UV printer, Supports flatbed printing and roll-to-roll printing	Power 1500w
G.W 1250kg	Product Size 4120*2160*1500mm

Application
Advertising, Decorative Items, Consumer Electronics, Digital Accessories, Jewelry, Leather, Handicrafts, Furniture and Home Furnishings, Toys and Other Industries

Sales Method
Factory Direct Sales, No Middlemen

Customized Service
Yes

After-Sales Service
1 Year Warranty/Local Service by Overseas Engineers/24/7 Online Service/Life-time After Sales Service

Printer Features

01

Dual Safety Assurance

The factory is certified by SGS and ISO 9001, and its products have passed CE compliance testing. From production to delivery, it fully complies with international quality and safety standards.



02

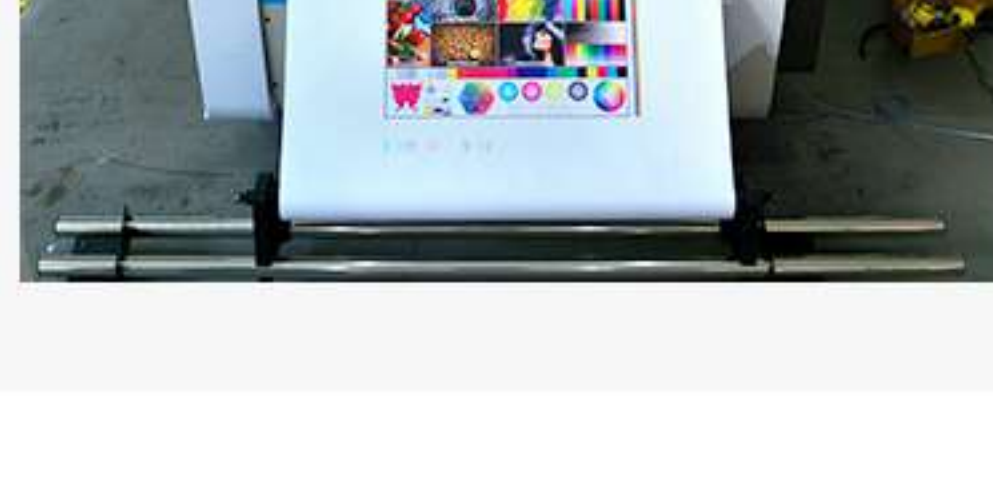
Dual Safety Assurance

With color combinations including C/M/Y/K/W/W, C/M/Y/K+W/W+V/V, C/M/Y/K+C/M/Y/K; adopting Ricoh's patented piezoelectric inkjet technology, it features precise ink droplet control and excellent grayscale control capability. It achieves high-precision printing on various rigid and flexible substrates with outstanding detail performance, meeting commercial printing quality requirements.

03

Dual-mode Hybrid UV Printing Solution

One machine adapts to two printing scenarios. Simply install the detachable roll printing components to switch between flatbed/roll-to-roll modes, eliminating redundant equipment investment and improving printing efficiency.



04

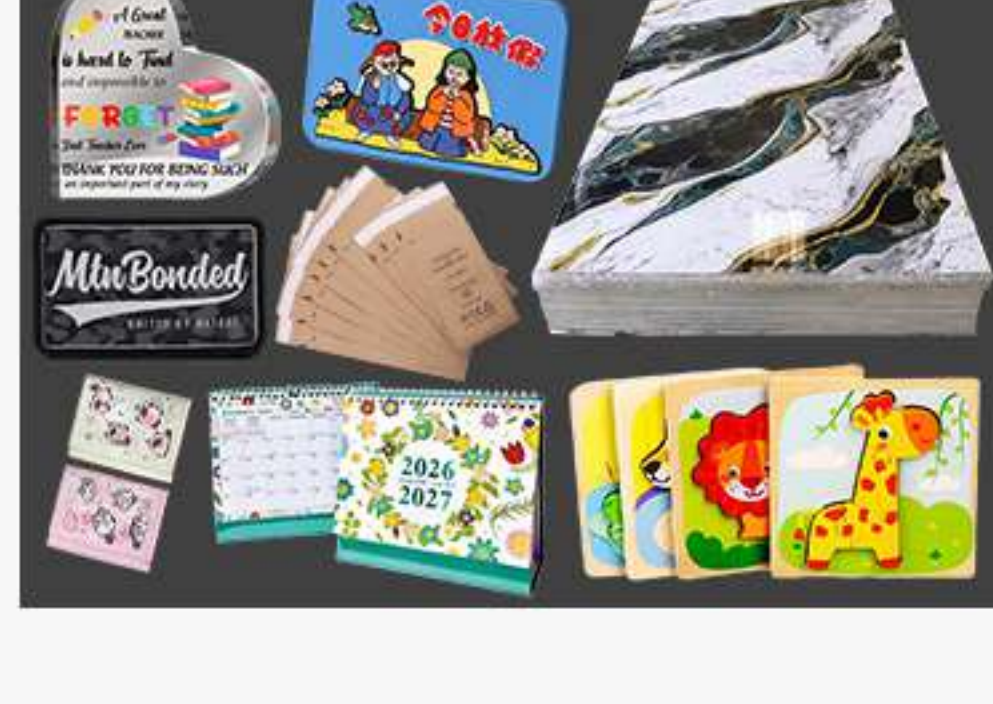
Full-Platform Vacuum Adsorption

The SGN2513 UV flatbed printer features a large printing platform of 2500mm * 1300mm. The entire printing area of the printer can easily adsorb media, thereby enhancing production efficiency, accuracy and precision; no tape or other fixing methods are required.

05

Automatic Printing Height Detection

The printer can automatically detect and adjust the printing height, with a maximum media thickness of up to 5.91 inches (approximately 150 mm), thus providing a wider range of printing possibilities for your business.



06

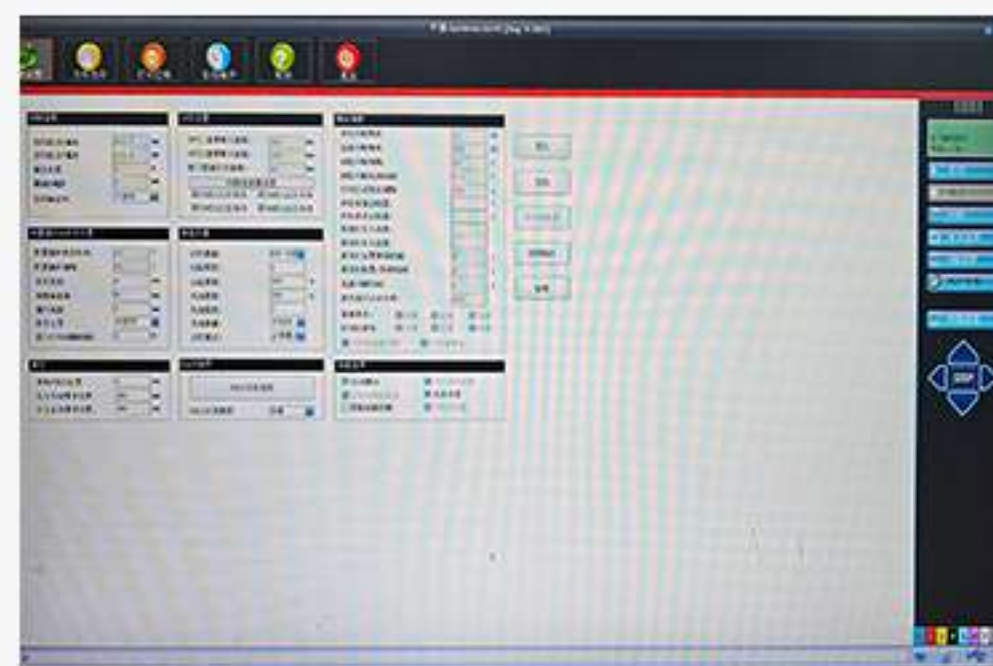
Wide Application Range

It can print directly on diverse materials such as rigid substrates, plastic sheets, stone, leather, PVC, acrylic, ceramics, metals and wood. It is applied in numerous industries including consumer electronics, digital accessories, indoor and outdoor advertising, decoration, DIY promotional products and gifts.

07

Strong Compatibility

The printer software is compatible with RYPC, Ultraprint, Photoprint, Colorgate and Wasatch; supports image formats such as TIFF (RGB & CMYK), BMP, PDF, EPS, JPEG; and allows printing after RIP processing or printing while RIP processing.

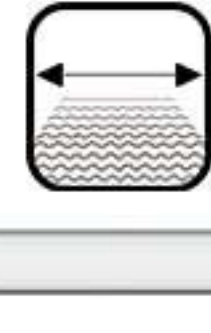







02

Reliable and Durable Configuration

It adopts an all-steel integrated body to lay a durable foundation, and is equipped with a linear motor and a magnetic grid ruler to achieve precise driving and positioning. At the same time, it is equipped with an extended X-axis design to expand the working range, and supplemented by a printhead anti-collision system and a built-in static elimination device to ensure operational safety, comprehensively enhancing the durability and operational reliability of the equipment.

Main Printing Parameters

 Max printing width of 2500mm	 Max printing speed of 32 m²/h
 Max printing length of 1300mm	 Max printing height of 150mm
 Max printing resolution up to 720*1200dpi	 UV ink

Need Free Samples?

We'd be happy to send you free samples upon request and we sincerely invite you to visit our factory in person. See the printing quality for yourself, and let our work help you win over clients and secure more orders.

